



THE SSC CONTROLS COMPANY

PREMIER INDUSTRIAL CONTROLS

Product Information Sheet

S-Series Foot Switches with Guards

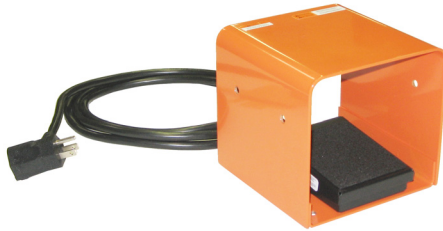
The S-Series with Guards provide an exceptional value for a light-duty guarded foot switch. The package includes the reliable S-Series foot switch enclosed in a durable 12-gauge steel guard and various cable or foot switch action configurations. The guard provides a comfortable housing in which to locate the foot, as well as protect the switch from debris.

Design features:

- Tough, durable 12-gauge steel housing.
- Available in any combination of S-series foot switches (standard models listed below).
- Bolt-down holes included in the base.
- Includes rubber bumper feet.

Quality features:

- Designed and manufactured under a quality system certified to ISO 9001 requirements.
- Includes 1-year warranty.
- Made in USA of imported and domestic components.



Single-Unit Guard (S100-1501G shown)

Dimensions, L x W x H: 6.0" x 6.0" x 5.5"

Weight: 5.4 pounds

Finish: powder paint, safety orange



Dual-Unit Guard (S100-1502DG shown)

Dimensions, L x W x H: 10.3" x 6.0" x 5.6"

Weight: 8.4 pounds

Finish: powder paint, safety orange

Model	# of Switches	Rating	Cord	Price	Certification
S100-1501G	1	15 amp, 125 VAC	8-foot cable with connector	\$41.00	
S100-1502G	1	15 amp, 125/250 VAC	8-foot cable with leads	\$39.50	
S100-1501DG	2	15 amp, 125 VAC	8-foot cables with connectors	\$68.20	
S100-1502DG	2	15 amp, 125/250 VAC	8-foot cables with leads	\$65.88	
DS100-DG	2	13 amp, 125/250 VAC	single 8-foot cable with leads	\$81.00	

Momentary action: Press and hold to turn on, release to turn off.



Warning: To avoid personal injury, do not use foot switches on machinery lacking effective point-of-operation safeguards. Disconnect input power before installing or removing this control.

The SSC Controls Company
 8658 Tyler Boulevard Mentor, Ohio 44060
 Phone: 440 205-1600 Fax: 440 205-1700